



**1. Shakedown**

- a. See Pgs. 3-4 for shakedown information.

**2. Schedule Update**

- a. Due to road conditions and logging operations stage 1,3 To The Towers has been changed to Taylor Towne.
- b. Due to extended field to 100 cars. The stage loops on Saturday have been changed so they alternate.
- c. Added Media zones to the schedule. These are added to transits, most being just before regroup in with one just before TC of the first running of Nahwatzel Meadows. It is encouraged for competitors to participate in these media zones.
- d. Updated misc. mileages and times.
- e. See attached Pg. 5-7

**3. Dayton Route Update**

- a. Dayton route has changed due to a Stage locked landowner. New loop adding to regain milage back. Please do not reference Recce video posted. A new recce video will be uploaded by April 5<sup>th</sup>, 2026.

**4. Update Committee Role List in Supplemental Regulations**

- a. Change Ethan “Jesh” Steinbrugger from EMT/Sweep Coordinator to Chief of Emergency
- b. Change Tim Chovanak from Asst. EMT/Sweep Coordinator to Chief of Security

**5. Correct Recce Date in Supplemental Regulations**

- a. In Section 8.1 Thursday, April 15, 2026 Should read Thursday April 16, 2026



**6. Friday April 17, 2026 Parc Expose Move in Info**

- a. See pg. 8-10 for Friday Parc Expose Layout Map.
- b. Parc Expose on Friday is located at Toyota of Olympia in Tumwater WA in the Gravel lot Next to the dealership.
  - Address: 6969 Tye Dr SW, Tumwater, WA 98512
  - Entrance Gate GPS: 46.98888, -122.92098
- c. Move in Schedule
  - Start Order 1-20 by 13:10
  - Start Order 21-41 by 13:20
  - Start Order 42-64 by 13:30
  - Start Order 65-75 by 13:40
  - Start Order 86-100 by 13:50

**7. Saturday April 18, 2026 Parc Expose Move in Info**

- a. See pg. 11-12 for Saturday Parc Expose Layout Map.
- b. Parc Expose on Saturday is located at downtown Shelton WA on West Railroad Ave between 6<sup>th</sup> Street and 2<sup>nd</sup> Street.
- c. Entrance GPS: 47.21331, -123.10592
- d. Move in Schedule
  - Start Order 1-20 by 08:40
  - Start Order 21-41 by 08:50
  - Start Order 42-64 by 09:00
  - Start Order 65-75 by 09:10
  - Start Order 86-100 by 09:20

**8. Drivers Meeting**

- a. Driver's meeting will be at the ARA truck on Friday during Parc Expose at 15:00. See Friday parc Map on Pg. 8 for truck location.

Matt Flaisig, Clerk of Course

Jeff Snowden, Asst. Clerk of Course



## Shakedown Stage Information

Shakedown Stage will be Thursday April 16, 2026 from 0900-1300. Competitor participation is voluntary. Shakedown is not open to the public. Driver and Co-Driver/passenger MUST wear safety equipment meeting requirements in RTR Section 1.

Entry is \$200 per car. Email [rallystage@hotmail.com](mailto:rallystage@hotmail.com) to sign up for a spot. Payment will be made at registration. Cash preferred. You will get route instructions and your Run Punch Card once payment is made.

Recce will be open Wednesday April 15<sup>th</sup> 2026 from 1300-2000. Recce will take place during the standard open recce time. No recce of shakedown will be available on Thursday.

The stage is open to all competitors. First come first serve from first car out at 0900 to last car start 1300. Cars will be released on 1-2 minute intervals.

Only 3 runs per car, competitors will be given a punch card with their car number. This card cannot be shared between competitors. Only 1 card may be purchased. This card must be presented at the start to be allowed to start.

The stage is roughly 6 miles long, features a lot fast flowy sections, some tighter narrow parts and even a longer straight that will represent the Olympus stages well.

All media to be in place by before course opening sweep. Stage stoppage for media movement will **not** be permitted during the stage running. This is to test and shakedown your car.

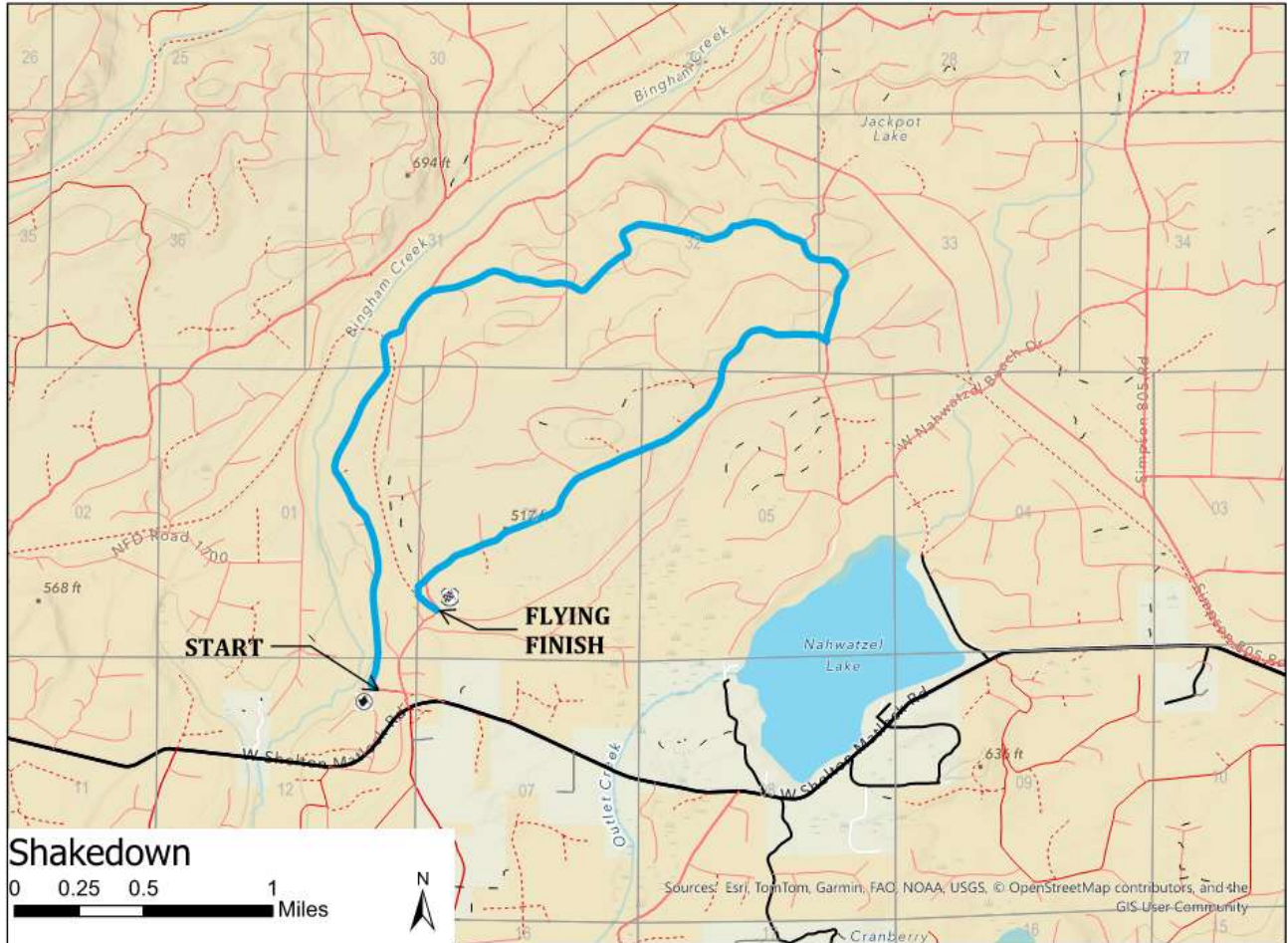
Please try to keep it on the road! We want to maximize the running time for everyone; **extra time will not be given to make up for clearing the stage.**

There will be NO service area. You must service out of your service area for the event at Sanderson field.

**2026 Kubota Olympus Rally Presented by Dirtfish**  
**Drivers Bulletin #2**  
**Shakedown, Schedule Update, Parc Info, Misc. Supps Updates**  
**3/26/26**



**ShakeDown Map:**





**2026 Kubota Olympus Rally Presented by Dirtfish**  
**Drivers Bulletin #2**  
**Shakedown, Schedule Update, Parc Info, Misc. Supps Updates**  
**3/26/26**



START (Sections 3,4,5,6)		2026 OLYMPUS RALLY			Saturday April 18, 2026		
TC	LOCATION	SS DIST	TRANSIT DIST	TOTAL DIST	LATENESS TIME	TRANSIT TIME	FIRST CAR DUE
	Parc Expose(Downtown Shelton)						9:30
4B	<b>MTC OUT (Downtown Shelton)</b>						<b>11:00</b>
	distance to next refuel	(24.27)	(27.53)	(51.80)			
5			3.98	3.98		0:15	11:15
<b>SS 5</b>	<b>Dayton</b>	<b>11.00</b>			<b>0:19</b>		<b>11:18</b>
6			12.25	23.25		0:35	12:12
<b>SS 6</b>	<b>Stillwater</b>	<b>13.27</b>			<b>0:22</b>		<b>12:15</b>
6A	REGROUPING IN		11.30	24.57		0:25	13:02
6B	REGROUPING OUT - SERVICE IN					0:25	13:27
	<b>SERVICE B (Sanderson)</b>	24.27	27.53	51.80			
6C	SERVICE OUT					0:30	13:57
RZ	REFUEL						
2	Distance to next refuel	(25.83)	(23.17)	(49.00)			
7			15.86	15.86		0:45	14:42
	Media Zone @ junction before TC7 (10 minutes)						
<b>SS 7</b>	<b>Nahwatzel Meadows</b>	<b>25.83</b>			<b>0:38</b>		<b>14:45</b>
7A	REGROUPING IN		7.31	33.14		0:20	15:43
7B	REGROUPING OUT - SERVICE IN					0:25	16:08
	<b>SERVICE C (Sanderson)</b>	25.83	23.17	49.00			
7C	SERVICE OUT					0:45	16:53
RZ	REFUEL						
3	Distance to next refuel	(24.27)	(17.86)	(28.86)			
8			5.61	5.61		0:25	17:18
<b>SS 8</b>	<b>Dayton 2</b>	<b>11.00</b>			<b>0:19</b>		<b>17:21</b>
9			12.25	23.25		0:35	18:15
<b>SS 9</b>	<b>Stillwater 2</b>	<b>13.27</b>			<b>0:22</b>		<b>18:18</b>
	Media Zone @ Sanderson before Regroup In (10 minutes)						
9A	REGROUPING IN		11.30	11.30		0:35	19:15
9B	REGROUPING OUT - SERVICE IN					0:25	19:40
	<b>SERVICE D (Sanderson)</b>	24.27	17.86	28.86			
9C	SERVICE OUT					0:30	20:10
RZ	REFUEL						
4	Distance to next refuel	(25.83)	(23.17)	(49.00)			
10			15.86	15.86		0:35	20:45
<b>SS 10</b>	<b>Nahwatzel Meadows 2</b>	<b>25.83</b>			<b>0:38</b>		<b>20:48</b>
10A	<b>MTC In (Saderson)</b>		7.31	33.14		0:20	21:46
<b>Saturday Totals</b>		100.20	91.73	191.93			

2026 Kubota Olympus Rally Presented by Dirtfish  
 Drivers Bulletin #2  
 Shakedown, Schedule Update, Parc Info, Misc. Supps Updates  
 3/26/26



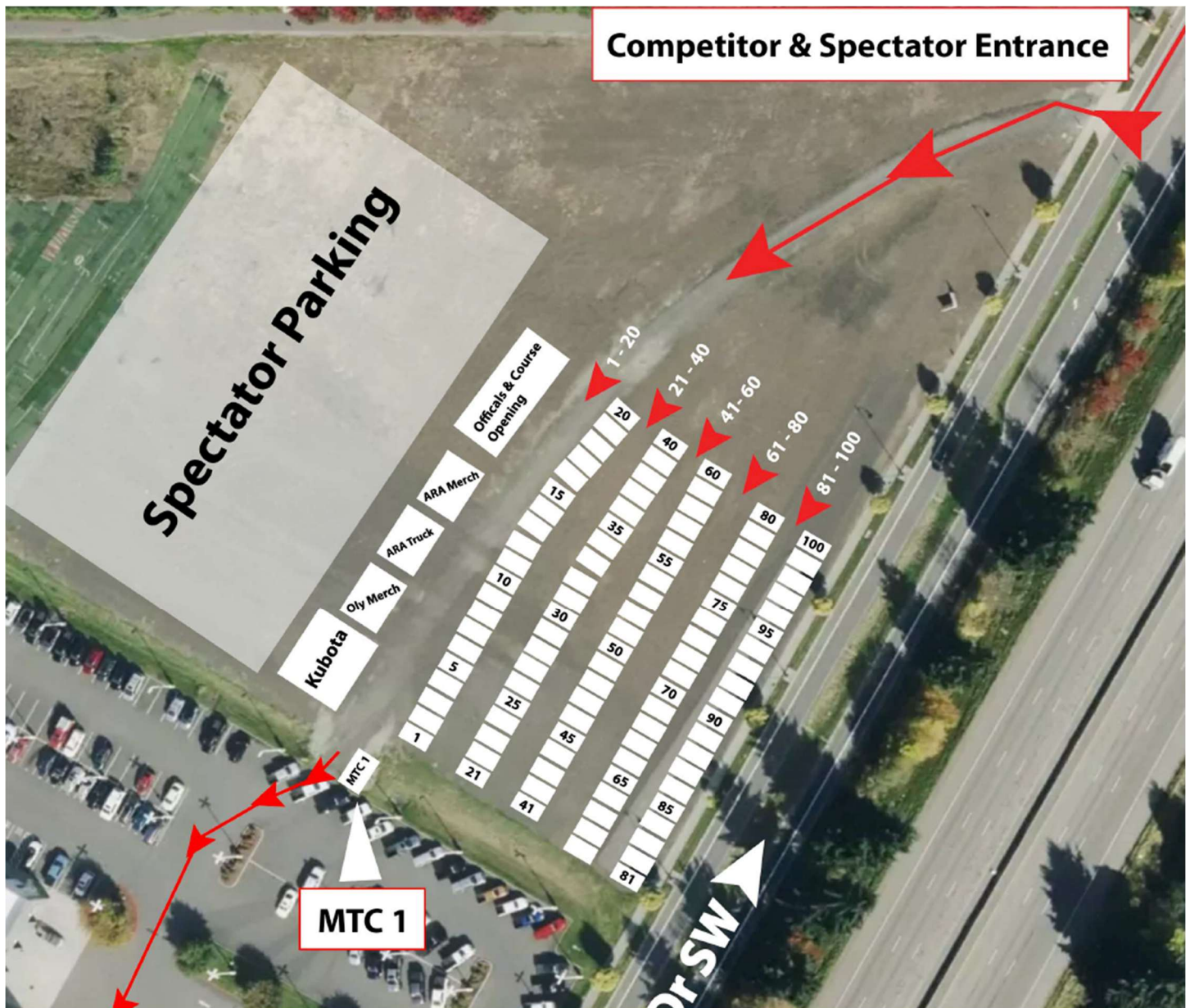
START - (Sections 7,8,9)		2026 OLYMPUS RALLY			Sunday April 19, 2026		
TC	LOCATION	SS DIST	TRANSIT DIST	TOTAL DIST	LATENESS TIME	TRANSIT TIME	FIRST CAR DUE
10B	MTC OUT (Service)						8:30
	Distance to next refuel	(22.52)	(47.37)	(62.53)			
11			22.03	22.03		0:45	9:15
SS 11	Kuhnle	5.28			0:10		9:18
12			1.50	6.78		0:10	9:38
SS 12	Schafer	9.88			0:15		9:41
13			2.04	11.92		0:10	10:06
SS 13	Deckerville 43	7.36			0:11		10:09
	Media Zone @ Sanderson before Regroup In (10 minutes)						
13A	REGROUPING IN		21.80	21.80		0:48	11:08
13B	REGROUPING OUT - SERVICE IN					0:20	11:28
	SERVICE E (Sanderson)	22.52	25.57	48.09			
13C	SERVICE OUT					0:40	12:08
RZ	REFUEL						
5	Distance to next refuel	(28.57)	(65.54)	(94.11)			
14			12.25	12.25		0:35	12:43
SS 14	Mason Lake	6.05			0:11		12:46
15			27.95	34.00		0:50	13:47
SS 15	Kuhnle 2	5.28			0:10		13:50
16			1.50	6.78		0:10	14:10
SS 16	Schafer 2	9.88			0:15		14:13
17			2.04	11.92		0:10	14:38
SS 17	Deckerville 43 2	7.36			0:11		14:41
17A	REGROUPING IN (Regional MTC)		21.80	29.16		0:38	15:30
17B	REGROUPING OUT - SERVICE IN					0:20	15:50
	SERVICE F (Sanderson)	28.57	65.54	94.11			
17C	SERVICE OUT					0:30	16:20
RZ	REFUEL						
6	Distance to next refuel	(6.05)	(19.90)	(25.95)			
18			12.25	12.25		0:35	16:55
SS18	Mason Lake (National Power Stage)	6.05			0:11		16:58
18A	MTC IN (Sanderson)		7.65	13.70		0:15	17:24
Sunday National Totals		57.14	132.81	182.59			
Sunday Regional Totals		51.09	91.11	142.20			

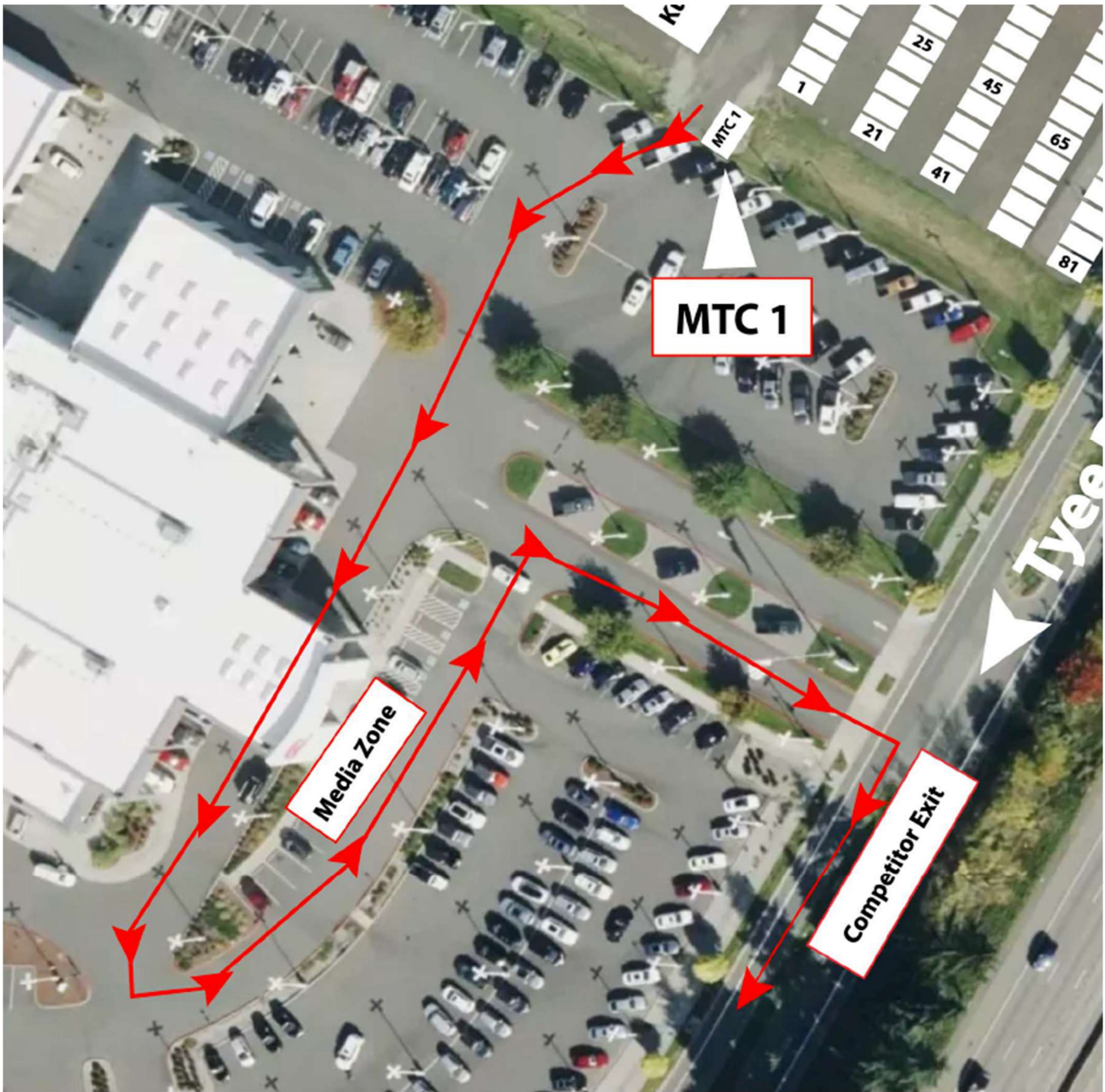
Section 7

Section 8

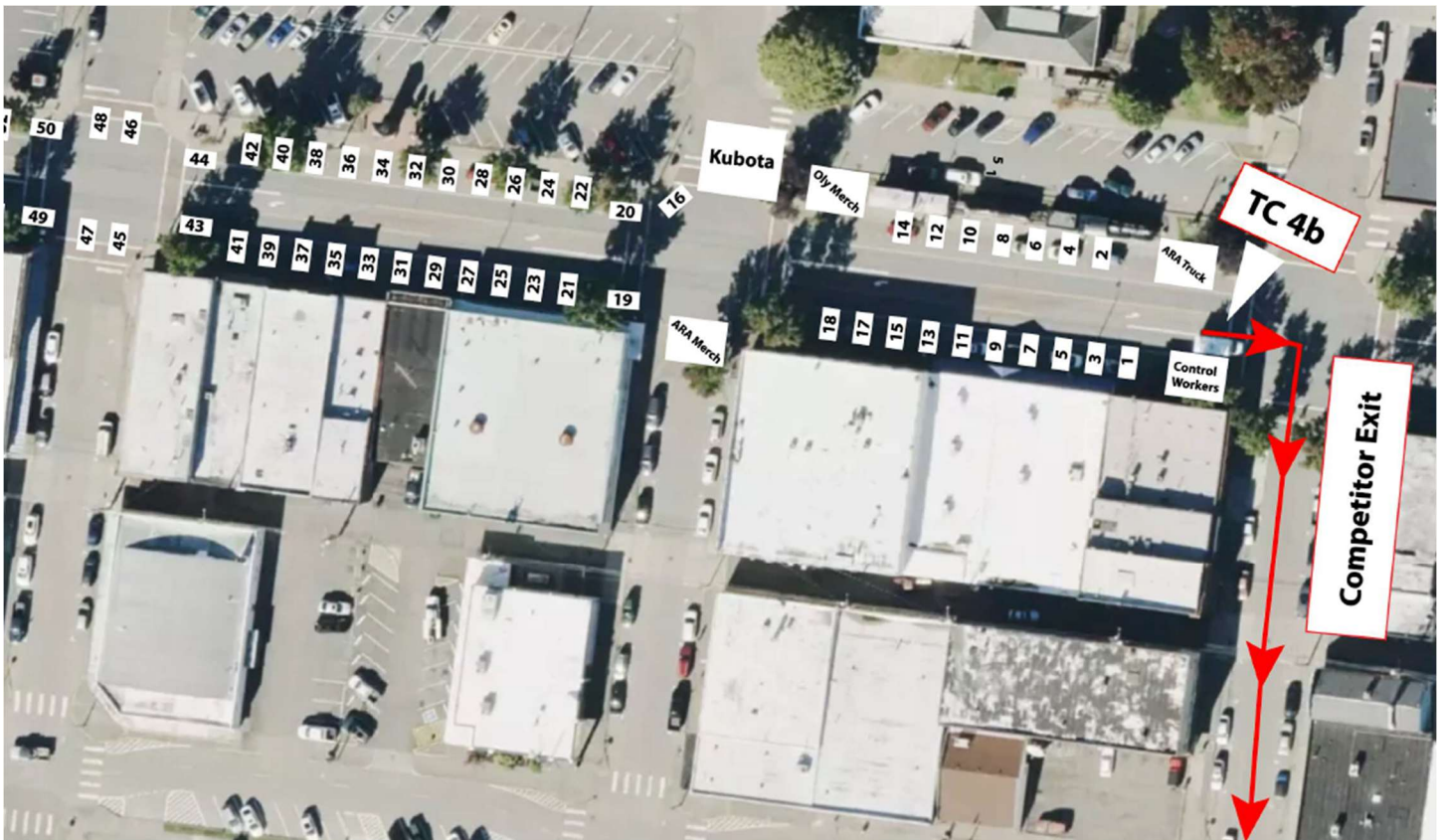
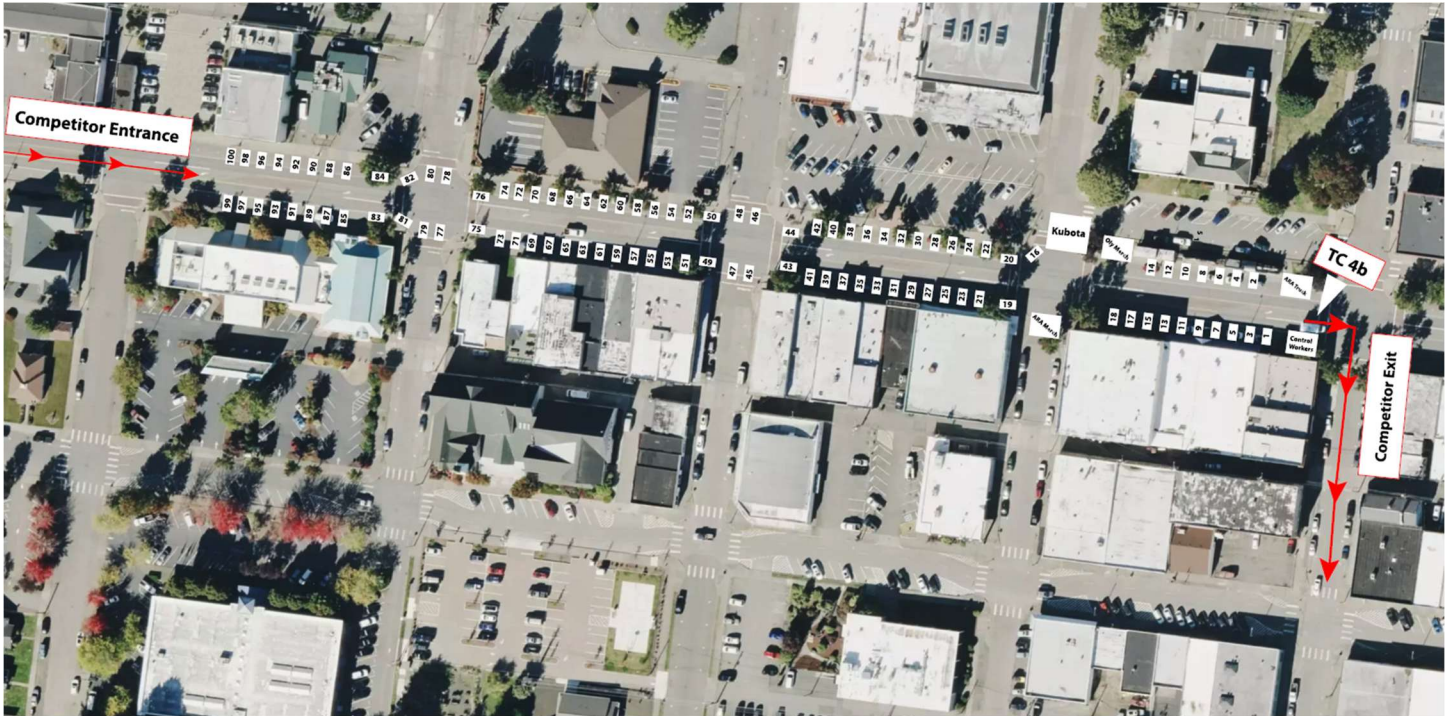
Section 9







2026 Kubota Olympus Rally Presented by Dirtfish  
Drivers Bulletin #2  
Shakedown, Schedule Update, Parc Info, Misc. Supps Updates  
3/26/26



2026 Kubota Olympus Rally Presented by Dirtfish  
Drivers Bulletin #2  
Shakedown, Schedule Update, Parc Info, Misc. Supps Updates  
3/26/26

